

SAFEsend™

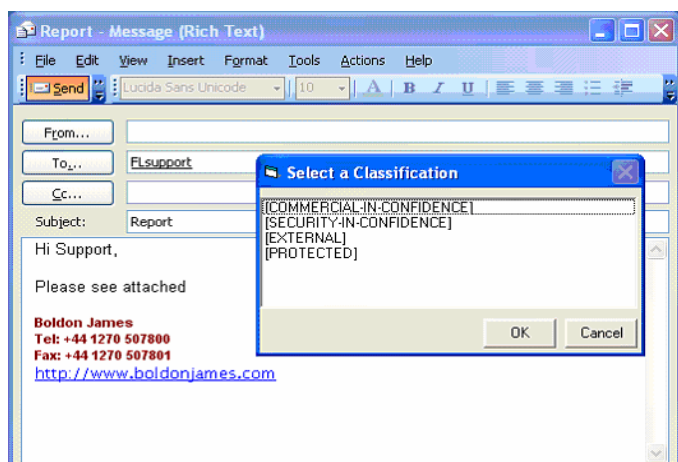
Email Security Compliance and Protective Marking in one simple tool.

An easy to use, powerful tool to add security labels/protective marking to emails minimising unauthorised or inadvertent distribution of corporate information.

Produced by Boldon James SAFEsend reflects 15 years of experience developing formal messaging solutions that help maintain the integrity and security of many military and intelligence groups around the globe.

Market Challenge

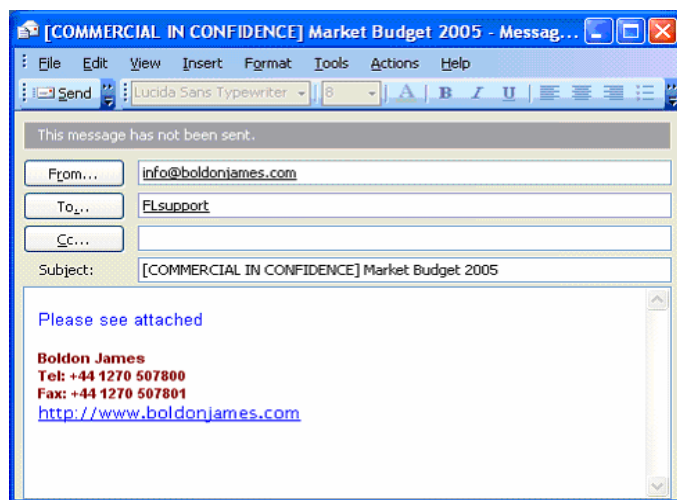
Modern email infrastructures are tightly integrated with corporate systems and procedures. Each day corporate email carries huge amounts of sensitive company and personnel data across the network. This presents a major business risk to most organisations. Put simply email has the frightening potential of being the world's largest photocopier and fax machine combined. Organisations, both government and commercial, desperately need a simple solution that "controls the photocopier"!



In the press, business columns are full of examples of corporate secrets or personal information being circulated, either inadvertently or deliberately, between organisations, causing embarrassment, consequential loss and even litigation.

One of the most effective ways to improve the control and distribution of data is "Protective Marking" or Labelling.

Once labelled it is possible to monitor and manage who is able to receive that information. The process of marking documents with Labels (such as **TOP SECRET** or **COMPANY-CONFIDENTIAL**) and giving users clearances (or access rights) is very well known in the public sector and even in the corporate world, but the expense and complexity has restricted implementation to military and intelligence agencies. Unfortunately there are few software developers that have a track record of understanding and successfully implementing this technology.



Boldon James' Solution

SAFEsend™ is an email client plug-in that supports the automatic addition of a Protective Mark or Security Label (**SECRET, PERSONAL, MEDICAL-IN-CONFIDENCE** etc) to an email and, before allowing the user to send the message, performs a check to ensure that the recipient has sufficient access rights or **clearance** to read the message.

During central configuration and automated installation administrators may define multiple security labels and user clearances with minimal impact on the end user. Typically users address their email normally and press **SEND**, at this stage they are prompted to assign a protective mark or security label to the message. This might be as simple as **INTERNAL** or **EXTERNAL**.

Prior to passing the message to the server SAFEsend checks the message recipients to ensure they are cleared



(have sufficient access rights) to read the message; if they are, then the message is delivered. If not, the sender is alerted with details of the clearance issue.

The process works with both internal and external recipients to ensure that sensitive information cannot be sent to cause associated embarrassment or loss.

When the message is sent SAFESend™ adds the chosen security label to the message. The label is added either to the message subject, or to the first line of text, or both. Thus on receiving the message users see the label as a simple string of text in those positions.

Product Components

The SAFESend™ comprises a set of components that perform the following tasks:

- **Label Creation Module:** Prior to sending the message SAFESend™ sets a security label on the message. This is via a simple dialogue offering a choice of labels. The dialogue is configurable for many different security classifications.
- **Can Send Checker:** Once the security label of the message has been set, the product checks that the intended recipients are cleared to receive a message at that classification. This will prevent the inadvertent leaking of company confidential information to competitors, or perhaps personal performance reviews marked 'staff-in offence' or 'medical information' going to the wrong person.
- **Configuration and Admin Tool:** The client component can be automatically deployed and configured using a central scripted installation process.. Options here include, the number of labels supported, the wording and positioning of the security labels within the message, and the wording of any messages encountered due to a label/clearance mismatch.
- **A Directory Editing Tool:** To set Recipient Clearance levels, which define the maximum security classification of messages that can be received. An unlimited number of classification levels can be supported. This is a secure central administrator function

We provide messaging and connectivity software solutions tailored to key vertical markets including Defence, Aviation and Government. In the UK our high grade consultants extend this offering by assisting organisations to manage IT and operational risks through a portfolio of services. The utilisation of commercial off-the-shelf (COTS) software at the core of our messaging and directory solutions enables us to provide products which meet the requirements of high grade formal messaging environments such as Defence, Intelligence and Aviation as well as other environments in Government and Commerce. The Consultancy Services division is focused on the creation of Security Policy, BS7799 implementation (through to certification if required), Risk Assessment, Training and Awareness campaigns, Business Continuity and Penetration Testing. These services are tailored for Central and Local Government, the NHS, Utilities, Police Services and large Corporations and led by consultants who are CESC Listed Advisor Scheme members (CLAS) and CHECK accredited team leaders. Our robust data communications software provides core functionality in many OSI networks including support for the majority of users of ICL (Fujitsu Services) VME Mainframe Computers both in the UK and around the world. Boldon James is proud of its reputation which is built on the competence of our staff, many of whom can be categorised as world class performers in their field. Our staff hold an impressive array of relevant professional qualifications and accreditations. We believe that customer service is the key to success.

Boldon James Reseller - eB2Bcom

Melbourne: +61-3 -9896-7800
Sydney: +61-2-9779-1597
Canberra: +61-2-6288-1753
Brisbane: +61-7-3871-1440
Singapore: +65-6841-7374
Email: sales@eb2bcom.com
Web: www.eb2bcom.com

- **Mail-Guard Integration:** By adding the security label to either the Message Subject or the First Line of Text (FLOT) compatibility is guaranteed with the most popular email compliance and border control guards. The combination of the Boldon James SAFESend™ and products such as the Entrust® Entelligence™ Compliance Server form a powerful alliance to minimise the risks of inadvertent or deliberate leakage of sensitive material.

Organisation Benefits

- Prevents inadvertent distribution of sensitive information to people who are not authorized.
- Configurable and centrally managed system
- Combines with Server based compliance engines to build security and strength in depth.
- Forces users to take responsibility for the content and distribution of their emails.
- Full seamless integration with Microsoft Active Directory, Outlook and Exchange.

User Benefits

- Intuitive user interface requires minimal training time.
- Meaningful, tailored, user-friendly dialogues.
- Checks at the client end add security and productivity benefits over server side checking.

Technical Details

- SAFESend™ runs on Microsoft® Windows 2000™ and above.
- Current Version requires Microsoft® Exchange Server 2000™ or later and Microsoft® Outlook 2002™ or later.
- SAFESend™ is supplied on a single licensed CD for centralised, configuration and installation.
- SAFESend™ supports Microsoft® Systems Management Server™ 2.0 and 2003 and other scripted installation processes.
- SAFESend™ includes full on-line help and configuration texts.